

DESCRIPTION

- “Big & Tall” High back leather/pvc executive chair
- 23" inside seat width
- Torsion knee tilt mechanism with lock adjusts for individual comfort
- Adjustable tension control
- 5 star nylon base
- Gas lift with 3-1/2" range
- Leather arm pads
- Waterfall seat front
- Leather arm pads
- Rated for 350 lbs.
- Soft casters available
- GREENGUARD Indoor Air Quality Certified®

Green[™] made with 96% recyclable materials

DIMENSIONS

	Height	Width	Depth
Overall	46.75 - 50.25"	30.00"	28.75"
Seat	20.00 - 23.50"	23.00"	19.00"
Back	31.50"	23.00"	

SHIPPING INFORMATION

Shipped Via LTL

Carton Cube 13.00
Weight 63.00# gross

Shipped Via Container

Cube 7.49
Weight 53.90# net
Weight 60.50# gross

Floor	Pallet	
20'	127	
40'	269	220
40' HQ	291	264



Gas lift with 3-1/2" range

Green™

is good

For a Better Working Environment.



Plastic & Foam 17.59%

- Arms
- Bushing
- Telescope
- Casters
- Nylon base
- Seat foam



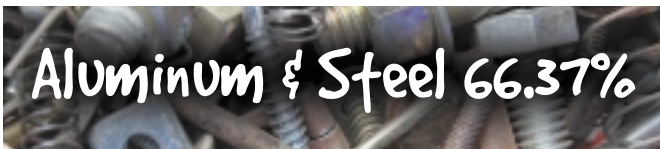
Wood 5.83%

- Seat



Leather & Fiber 6.58%

- Leather
- Fiber



Aluminum & Steel 66.37%

- Seat support frame
- Back support frame
- Mechanism
- Screws & bolts
- Gas lift
- Aluminum base



Non-Recyclable 3.63%

- PVC

96%  **RECYCLABLE**



9064DH
COMMANDER



ChairWorks® • 755 Raco Drive, Suite A • Lawrenceville, Georgia 30046
770-277-2577 • Fax 770-277-2578 • www.chairworks.com

Australia~Belgium~Denmark~France~Hong Kong~Ireland~Japan~New Zealand~Norway~South Africa~Spain~Taiwan~United States
The ChairWorks® Manufacturing Group, Ltd.