

ChairWorks®



Contract/Commercial Price List

Effective January 1, 2011



TERMS & CONDITIONS

TERMS OF SALE

Prices are subject to change without notice. All orders are subject to prices in effect at the time of order. Net 30 days with established satisfactory credit. All other orders require payment in advance. Past due accounts are subject to a finance charge of 1-1/2 % per month or 18% per annum.

To avoid errors and/or duplication, ChairWorks® requires that ALL orders be submitted in writing. Dealer/Purchaser is responsible for providing correct and complete information when submitting order.

For domestic sale and use in North America and Mexico only. Due to licensing restrictions, resale or export outside North America and Mexico is not permitted.

SHIPPING INFORMATION

TITLE OF GOODS passes to purchaser and our responsibility ceases when shipment is accepted by any carrier from our Distribution Center. ChairWorks reserves the right to ship via carrier and method of our choosing, unless an alternate method has been agreed upon in writing, in advance. If shipment is received damaged, note damage on carrier freight bill at time of acceptance and file claim for appropriate damages from the carrier. Concealed damage must be reported to the transportation company within 15 days from the date of delivery. All damaged merchandise claims must be filed directly with the delivery carrier.

MINIMUMS & FREIGHT CHARGES

- Orders over \$500.00 net will ship freight prepaid.
- Freight and handling charges of \$55.00 apply for any order under \$500.00 net.
- Freight and handling charges of \$32.00 apply for any order shipped direct to residential address and will ship RTA only.
- Freight and handling charges of \$55.00 (plus as noted below) apply for any orders for assembled chairs that ship direct to a residential address.
- We will accept customer's own freight account for orders that do not meet freight minimum requirements.

All shipments are subject to additional fees as charged by the carrier for residential delivery, beyond delivery zone, and other.

RETURNED GOODS

Returned merchandise will not be accepted unless authorized in writing prior to return; ship freight prepaid in original carton, and if applicable, will be subject to a restocking charge of 25%. Customer will be responsible for any damage and the cost of re-boxing if required prior to any credits being issued.

ORDER CHANGES AND CANCELLATIONS

Due to the quick ship nature of ChairWorks products, we must limit customer changes and cancellations. All chairs generally ship in 48 hours of receipt of an approved order. Orders cancelled or changed after shipment will be subject to a 25% restocking charge plus the return freight charges. All changes or cancellations must be in writing.

ASSEMBLED AND RTA PRODUCT

All chairs ship assembled or RTA as noted or requested on the order. Add "A" at end of model number for assembled product.

"Assembled" for office chairs: the seat back and arms are attached; cylinder, base and casters need to be popped on. No tools required. Guest chairs are complete.

"RTA" product comes in one carton, as separate parts. Assembly instructions and the tools required to complete assembly are included.

Soft casters (tile/hard surfaces) are available for most models at a list price of \$72.50 per set (includes 5 casters). Hard casters (carpet/soft surfaces) are standard.

DISCLAIMER

If a conflict arises between a) prices in software support packages furnished to the customer by ChairWorks or any other source on behalf of ChairWorks, and b) ChairWorks printed price lists, then the printed price list shall prevail.

All dimensions are in inches. Prices shown are current manufacturer's suggested list prices at the time of printing, and do not include any additional fees for special handling of freight. Descriptions, specifications, and prices are subject to change without notice. Errors and omissions are subject to corrections.

GREEN IS GOOD™

See inside for recyclable products as noted in the descriptions.

**ChairWorks® • 755 Raco Drive, Suite A • Lawrenceville, Georgia 30046
770-277-2577 • Fax 770-277-2578 • www.chairworks.com**

Australia~Belgium~Denmark~France~Hong Kong~Ireland~Japan~New Zealand~Norway~South Africa~Spain~Taiwan~United Kingdom~United States

The ChairWorks® Manufacturing Group, Ltd.





9039G ATRI

- High back leather/pvc executive chair to match 9139G and 9539N
- Swivel/spring tilt mechanism with lock
- 5 star nylon base
- Adjustable tension control
- Gas lift
- Rated for 350 lbs.
- Soft casters available

Green™ made with 91% recyclable materials

COLORS

- 2506 Black

RTA PRICE

\$441.00
Each

*ASSEMBLED PRICE

\$499.00
Each

HEIGHT
LOW/HIGH
43.00"/47.25"

WIDTH
INSIDE/OUTSIDE
20.25"/24.50"

DEPTH
INSIDE/OUTSIDE
18.50"/27.50"

SEAT HEIGHT
LOW/HIGH
18.50"/22.75"



9064D COMMANDER

- "Big & Tall" high back leather/pvc executive chair
- Torsion knee tilt mechanism with lock
- Adjustable tension control
- Gas lift with 3-1/2" height range
- Leather arm pads
- 5 star nylon base
- Rated for 350 lbs.
- Soft casters available

Green™ made with 96% recyclable materials

COLORS

- 2506 Black

RTA PRICE

\$849.00
Each

*ASSEMBLED PRICE

\$899.00
Each

HEIGHT
LOW/HIGH
46.75"/50.25"

WIDTH
INSIDE/OUTSIDE
23.00"/30.00"

DEPTH
INSIDE/OUTSIDE
19.00"/28.75"

SEAT HEIGHT
LOW/HIGH
20.00"/23.50"



9092G KARMA

- High back leather/pvc executive chair to match 9192G and 9592N
- Swivel/spring tilt mechanism with lock
- Adjustable tension control
- Gas lift
- Perforated leather in seat and lumbar
- Rated for 350 lbs.
- Soft casters available

Green™ made with 95% recyclable materials

COLORS

- 0606 Black
- 0633 Green
- 0634 Navy
- 0657 Berry
- 0697 Cobblestone

RTA PRICE

\$341.00
Each

*ASSEMBLED PRICE

\$399.00
Each

HEIGHT
LOW/HIGH
43.75"/48.00"

WIDTH
INSIDE/OUTSIDE
20.50"/25.50"

DEPTH
INSIDE/OUTSIDE
17.75"/28.00"

SEAT HEIGHT
LOW/HIGH
18.50"/22.75"

Add "A" at end of model number for assembled product. See 'Assembled and RTA Product' on page 1 for details.



9139G ATRI

- Low back leather/pvc conference chair to match 9039G and 9539N
- Swivel/spring tilt mechanism with lock
- 5 star nylon base
- Adjustable tension control
- Gas lift
- Rated for 350 lbs.
- Soft casters available

Green™ made with 90% recyclable materials

COLORS **RTA PRICE** ***ASSEMBLED PRICE**

• 2506 Black \$411.00 \$469.00
Each Each

HEIGHT LOW/HIGH	WIDTH INSIDE/OUTSIDE	DEPTH INSIDE/OUTSIDE	SEAT HEIGHT LOW/HIGH
36.00"/40.25"	20.25"/24.50"	18.50"/27.50"	18.50"/22.75"



9192G KARMA

- Mid back leather/pvc conference chair to match 9092G and 9592N
- Swivel/spring tilt mechanism with lock
- Adjustable tension control
- Gas lift
- Perforated leather in seat and lumbar
- Rated for 350 lbs.
- Soft casters available

Green™ made with 97% recyclable materials

COLORS **RTA PRICE** ***ASSEMBLED PRICE**

• 0606 Black \$321.00 \$379.00
• 0633 Green Each Each
• 0634 Navy
• 0657 Berry
• 0697 Cobblestone

HEIGHT LOW/HIGH	WIDTH INSIDE/OUTSIDE	DEPTH INSIDE/OUTSIDE	SEAT HEIGHT LOW/HIGH
36.75"/41.00"	20.50"/25.50"	17.75"/26.75"	18.50"/22.75"



9271S PRONTO

- Mid back leather/pvc executive chair
- Swivel/synchro tilt mechanism with infinite lock
- Adjustable tension control
- Waterfall seat front
- Lumbar support
- Gas lift
- Rated for 350 lbs.
- Soft casters available

Green™ made with 96% recyclable materials

COLORS **RTA PRICE** ***ASSEMBLED PRICE**

• 2506 Black \$491.00 \$549.00
Each Each

HEIGHT LOW/HIGH	WIDTH INSIDE/OUTSIDE	DEPTH INSIDE/OUTSIDE	SEAT HEIGHT LOW/HIGH
37.75"/42.50"	19.75"/26.50"	20.00"/25.75"	18.50"/22.75"

Add "A" at end of model number for assembled product. See 'Assembled and RTA Product' on page 1 for details.



9273Z VERONA

- High back leather/pvc executive chair
- Swivel/knee tilt mechanism with lock
- Adjustable tension control
- Leather top wrap on back
- Leather padded arms
- Gas lift
- Rated for 350 lbs.
- Soft casters available

Green™ made with 95% recyclable materials

COLORS

- 2506 Black

RTA PRICE

\$641.00
Each

*ASSEMBLED PRICE

\$699.00
Each

HEIGHT
LOW/HIGH
41.00"/43.75"

WIDTH
INSIDE/OUTSIDE
19.75"/24.50"

DEPTH
INSIDE/OUTSIDE
19.50"/29.25"

SEAT HEIGHT
LOW/HIGH
18.75"/21.50"



9359Z GRANDE

- High back leather/pvc executive chair
- Swivel/knee tilt mechanism with lock
- Adjustable tension control
- Gas lift
- Waterfall seat front
- Leather arm pads with memory foam
- Rated for 350 lbs.
- Soft casters available

Green™ made with 96% recyclable materials

COLORS

- 2506 Black

RTA PRICE

\$641.00
Each

*ASSEMBLED PRICE

\$699.00
Each

HEIGHT
LOW/HIGH
47.00"/49.75"

WIDTH
INSIDE/OUTSIDE
21.50"/28.25"

DEPTH
INSIDE/OUTSIDE
20.00"/32.50"

SEAT HEIGHT
LOW/HIGH
20.25"/23.00"

Add "A" at end of model number for assembled product. See 'Assembled and RTA Product' on page 1 for details.



9363U RESPONSE II

- High back fabric task chair
- 6-Way adjustable arms
- Ergonomic contour back and seat cushion
- Ratchet back height adjustment
- Adjustable back angle
- Seat angle adjustable
- Seat height adjustable
- Waterfall seat front
- Rated for 350 lbs.
- Soft casters available

Green™ made with 86% recyclable materials

COLORS

- 1532P Blue
- 1533P Ebony
- 1535P Pewter

RTA PRICE

\$391.00
Each

*ASSEMBLED PRICE

\$449.00
Each

HEIGHT
LOW/HIGH
38.75"/44.00"

WIDTH
INSIDE/OUTSIDE
19.00"/24.75"

DEPTH
INSIDE/OUTSIDE
18.50"/23.50"

SEAT HEIGHT
LOW/HIGH
17.50"/21.00"



9364U RESPONSE II

- Mid back fabric task chair
- 6-Way adjustable arms
- Ergonomic contour back and seat cushion
- Ratchet back height adjustment
- Adjustable back angle
- Seat angle adjustable
- Seat height adjustable
- Waterfall seat front
- Rated for 350 lbs.
- Soft casters available

Green™ made with 87% recyclable materials

COLORS

- 1532P Blue
- 1533P Ebony
- 1535P Pewter

RTA PRICE

\$371.00
Each

*ASSEMBLED PRICE

\$429.00
Each

HEIGHT
LOW/HIGH
37.50"/41.00"

WIDTH
INSIDE/OUTSIDE
19.00"/24.75"

DEPTH
INSIDE/OUTSIDE
18.50"/23.50"

SEAT HEIGHT
LOW/HIGH
17.50"/21.00"

Add "A" at end of model number for assembled product. See 'Assembled and RTA Product' on page 1 for details.

Reality™



9375J REALITY™

- High back fabric 24/7 task chair
- Larger scale design
- Rated for 500 lbs.
- Heavy duty arm with larger top pad
- Arm height and width adjustable
- Back angle adjustable
- Back height adjustable
- Seat angle adjustable
- Seat height adjustable
- Sliding seat pan
- Heavy duty gas lift

Green™ made with 100% recyclable materials

COLORS

- 4706 Black
- 4734 Blue
- 4769 Brown
- 4777 Charcoal

RTA PRICE

\$941.00
Each

*ASSEMBLED PRICE

\$999.00
Each

HEIGHT
LOW/HIGH
40.50"/47.00"

WIDTH
INSIDE/OUTSIDE
21.00"/30.00"

DEPTH
INSIDE/OUTSIDE
25.50"

SEAT HEIGHT
LOW/HIGH
18.50"/21.75"



- Heavy duty arm with larger top pad



- Heavy duty, intensive use mechanism

Add "A" at end of model number for assembled product. See 'Assembled and RTA Product' on page 1 for details.

Reality™



9383J REALITY™

- High back fabric 24/7 task chair
- 360° arm pad pivot
- Arm height and width adjustable
- Ratchet back height adjustment
- Adjustable back angle
- Seat angle adjustable
- Seat height adjustable
- Sliding seat pan
- Heavy duty gas lift
- Rated for 350 lbs.
- Soft casters available

COLORS

- 4706 Black
- 4734 Blue
- 4769 Brown
- 4777 Charcoal

RTA PRICE

\$741.00
Each

*ASSEMBLED PRICE

\$799.00
Each

Green™ made with 100% recyclable materials

HEIGHT
LOW/HIGH
39.00"/46.00"

WIDTH
INSIDE/OUTSIDE
18.00"/25.25"

DEPTH
INSIDE/OUTSIDE
17.50"/29.75"

SEAT HEIGHT
LOW/HIGH
18.50"/21.75"

Also Available



Includes:

- Height & width adjustable armset with sliding & pivoting arm pads-9889A006

Also available:

- Height & width adjustable armset-9895A006

Green™ made with 100% recyclable materials

RTA PRICE

\$661.00
Each

*ASSEMBLED PRICE

\$719.00
Each

HEIGHT
LOW/HIGH
39.00"/46.00"

WIDTH
INSIDE/OUTSIDE
18.00"/25.25"

DEPTH
INSIDE/OUTSIDE
17.50"/29.75"

SEAT HEIGHT
LOW/HIGH
18.50"/21.75"



- Standard model

Green™ made with 100% recyclable materials

RTA PRICE

\$591.00
Each

*ASSEMBLED PRICE

\$649.00
Each

HEIGHT
LOW/HIGH
39.00"/46.00"

WIDTH
INSIDE/OUTSIDE
18.00"

DEPTH
INSIDE/OUTSIDE
17.50"/29.75"

SEAT HEIGHT
LOW/HIGH
18.50"/21.75"

Add "A" at end of model number for assembled product. See 'Assembled and RTA Product' on page 1 for details.

Reality™



9384J REALITY™

- Mid back fabric 24/7 task chair
- 360° arm pad pivot
- Arm height and width adjustable
- Ratchet back height adjustment
- Adjustable back angle
- Seat angle adjustable
- Seat height adjustable
- Sliding seat pan
- Heavy duty gas lift
- Rated for 350 lbs.
- Soft casters available

COLORS

- 4706 Black
- 4734 Blue
- 4769 Brown
- 4777 Charcoal

RTA PRICE

\$711.00
Each

*ASSEMBLED PRICE

\$769.00
Each

Green™ made with 100% recyclable materials

HEIGHT
LOW/HIGH
35.75"/42.75"

WIDTH
INSIDE/OUTSIDE
18.00"/25.25"

DEPTH
INSIDE/OUTSIDE
18.50"/25.25"

SEAT HEIGHT
LOW/HIGH
18.50"/21.75"

Also Available



Includes:

- Height & width adjustable armset with sliding & pivoting arm pads-9889A006

Also available:

- Height & width adjustable armset-9895A006

Green™ made with 100% recyclable materials

RTA PRICE

\$631.00
Each

*ASSEMBLED PRICE

\$689.00
Each

HEIGHT
LOW/HIGH
35.75"/42.75"

WIDTH
INSIDE/OUTSIDE
18.00"/25.25"

DEPTH
INSIDE/OUTSIDE
18.50"/25.25"

SEAT HEIGHT
LOW/HIGH
18.50"/21.75"



- Standard model

Green™ made with 100% recyclable materials

RTA PRICE

\$561.00
Each

*ASSEMBLED PRICE

\$619.00
Each

HEIGHT
LOW/HIGH
35.75"/42.75"

WIDTH
INSIDE/OUTSIDE
18.00"

DEPTH
INSIDE/OUTSIDE
18.50"/25.25"

SEAT HEIGHT
LOW/HIGH
18.50"/21.75"

Add "A" at end of model number for assembled product. See 'Assembled and RTA Product' on page 1 for details.

Reality™



9391J PETITE

- Mid back fabric 24/7 task chair
- Smaller scale design
- 360° arm pad pivot
- Arm height and width adjustable
- Back angle adjustable
- Back height adjustable
- Seat angle adjustable
- Seat height adjustable
- Sliding seat pan
- Heavy duty gas lift
- Rated for 350 lbs.

Green™ made with 100% recyclable materials

COLORS **RTA PRICE** ***ASSEMBLED PRICE**

- 4706 Black
 - 4734 Blue
 - 4769 Brown
 - 4777 Charcoal
- \$711.00 Each \$769.00 Each

HEIGHT LOW/HIGH	WIDTH INSIDE/OUTSIDE	DEPTH INSIDE/OUTSIDE	SEAT HEIGHT LOW/HIGH
33.50"/39.25"	20.00"/26.25"	17.50"/26.50"	17.50"/19.50"

Also Available



Includes:

- Height & width adjustable armset with sliding & pivoting arm pads-9889A006

Also available:

- Height & width adjustable armset-9895A006

Green™ made with 100% recyclable materials

RTA PRICE ***ASSEMBLED PRICE**

\$631.00 Each \$689.00 Each

HEIGHT LOW/HIGH	WIDTH INSIDE/OUTSIDE	DEPTH INSIDE/OUTSIDE	SEAT HEIGHT LOW/HIGH
33.50"/39.25"	20.00"	17.50"/26.50"	17.50"/19.50"



- Standard model

Green™ made with 100% recyclable materials

RTA PRICE ***ASSEMBLED PRICE**

\$561.00 Each \$619.00 Each

HEIGHT LOW/HIGH	WIDTH INSIDE/OUTSIDE	DEPTH INSIDE/OUTSIDE	SEAT HEIGHT LOW/HIGH
33.50"/39.25"	20.00"	17.50"/26.50"	17.50"/19.50"

Add "A" at end of model number for assembled product. See 'Assembled and RTA Product' on page 1 for details.



9538C CUSHAIRE

- Matching elastomeric mesh back/fabric seat guest chair for Cushaire series
- Cantilever base
- Built in lumbar
- Durable black powder coat finish frame
- Rated for 350 lbs.

COLORS

- 4406 Black Fabric Seat/JY06 Black Mesh Back

RTA PRICE

\$329.00
Each

*ASSEMBLED PRICE

\$387.00
Each

Green™ made with 96% recyclable materials

HEIGHT LOW/HIGH

35.75"

WIDTH INSIDE/OUTSIDE

19.25"/24.00"

DEPTH INSIDE/OUTSIDE

19.00"/26.25"

SEAT HEIGHT LOW/HIGH

18.25"



9539N ATRI

- All over heavy duty PVC pull up to match 9039G and 9139G
- Rated for 350 lbs.

COLORS

- 2206 PVC Black

RTA PRICE

\$241.00
Each

*ASSEMBLED PRICE

\$299.00
Each

Green™ made with 81% recyclable materials

HEIGHT LOW/HIGH

35.75"

WIDTH INSIDE/OUTSIDE

19.25"/24.00"

DEPTH INSIDE/OUTSIDE

19.00"/26.25"

SEAT HEIGHT LOW/HIGH

18.25"



9542C AQUA II

- Matching elastomeric mesh back/fabric seat pull up for Aqua II series
- Adjustable width arms
- 2-1/2" seat with memory foam and molded foam in seat
- Adjustable lumbar
- Waterfall seat front
- Rated for 350 lbs.

COLORS

- 4406 Black Fabric Seat/KM-03 Black Mesh Back

RTA PRICE

\$441.00
Each

*ASSEMBLED PRICE

\$499.00
Each

Green™ made with 90% recyclable materials

HEIGHT LOW/HIGH

38.00"

WIDTH INSIDE/OUTSIDE

19.50"/25.50"

DEPTH INSIDE/OUTSIDE

18.25"/23.50"

SEAT HEIGHT LOW/HIGH

17.75"



9592N KARMA

- Leather/pvc pull up to match 9092G and 9192G
- Perforated leather in seat and lumbar
- Rated for 350 lbs.

COLORS

- 0606 Black
- 0633 Green
- 0634 Navy
- 0657 Berry
- 0697 Cobblestone

RTA PRICE

\$271.00
Each

*ASSEMBLED PRICE

\$329.00
Each

Green™ made with 93% recyclable materials

HEIGHT LOW/HIGH

36.25"

WIDTH INSIDE/OUTSIDE

19.50"/23.75"

DEPTH INSIDE/OUTSIDE

17.75"/26.75"

SEAT HEIGHT LOW/HIGH

18.00"

Add "A" at end of model number for assembled product. See 'Assembled and RTA Product' on page 1 for details.



9854S CUSHAIRE

- Mid back elastomeric mesh/fabric chair
- 2:1 Synchro mechanism
- Adjustable lumbar
- Built in lumbar
- Durable black powder coat finish frame
- Height adjustable arms
- 5 star nylon base
- Gas lift
- Waterfall seat front
- Rated for 350 lbs.

COLORS

- 4406 Black Fabric Seat/JY06 Black Mesh Back

RTA PRICE

\$329.00
Each

*ASSEMBLED PRICE

\$387.00
Each

Green™ made with 98% recyclable materials

HEIGHT LOW/HIGH	WIDTH INSIDE/OUTSIDE	DEPTH INSIDE/OUTSIDE	SEAT HEIGHT LOW/HIGH
35.25"/39.50"	19.00"/25.00"	18.25"/22.75"	17.50"/21.75"



9860J NETWORK

- High back elastomeric mesh back/fabric seat chair
- 2-way adjustable lumbar
- **ERGO^{active}**™ sliding seat pan
- Waterfall seat front
- Adjustable height & tension
- 360 degree free swivel
- 2:1 Synchro mechanism
- Nylon Base
- Gas lift
- 4-1/2" seat with memory foam and molded foam
- Weight-rated up to 350 lbs.

COLORS

- 2608 Black Fabric Seat/B006 Black Mesh Back

RTA PRICE

\$841.00
Each

*ASSEMBLED PRICE

\$899.00
Each

Shown with options:

- Adjustable headrest
- Height & width adjustable armset--9677A

Green™ made with 99% recyclable materials

HEIGHT LOW/HIGH	WIDTH INSIDE/OUTSIDE	DEPTH INSIDE/OUTSIDE	SEAT HEIGHT LOW/HIGH
48.00"/52.00"	21.00"/26.00"	22.00"/27.00"	22.00"/24.00"

Also Available

Includes all the standard features of the 9860J:

	RTA PRICE	*ASSEMBLED PRICE
<i>Includes:</i>		
• Height & width adjustable armset--9677A	\$811.00	\$869.00
• Adjustable headrest	\$771.00	\$829.00
• Standard model	\$741.00	\$799.00

Add "A" at end of model number for assembled product. See 'Assembled and RTA Product' on page 1 for details.



9889V AQUA II

- Mid back elastomeric mesh/leather chair
- Floating synchro mechanism
- Adjustable lumbar
- Adjustable back angle
- 5 star nylon base
- Gas lift
- Waterfall seat front
- Phased two-step back release mechanism
- Rated for 350 lbs.

Includes:

- Adjustable headrest-0006A8815-1 PU
- Height & width adjustable armset with sliding & pivoting arm pads-9889A006

Also available:

- Height & width adjustable armset-9895A006

Green made with 98% recyclable materials

COLORS **RTA PRICE** ***ASSEMBLED PRICE**

- 4406 Black Fabric Seat
 - 4406 Black Mesh Back
 - 4406-1 Gray Mesh Back
 - 4406-3 Brown Mesh Back
 - 4406-5 Navy Mesh Back
- RTA Price: \$741.00 Each
Assembled Price: \$799.00 Each

HEIGHT LOW/HIGH	WIDTH INSIDE/OUTSIDE	DEPTH INSIDE/OUTSIDE	SEAT HEIGHT LOW/HIGH
45.00"/51.50"	20.00"/28.00"	18.50"/23.00"	18.50"/22.00"

Also Available

Includes all the standard features of the 9889V:



Includes:

- Height & width adjustable armset with sliding & pivoting arm pads-9889A006

Also available:

- Height & width adjustable armset-9895A006

Green made with 98% recyclable materials

RTA PRICE ***ASSEMBLED PRICE**

- \$711.00 Each
- \$769.00 Each

HEIGHT LOW/HIGH	WIDTH INSIDE/OUTSIDE	DEPTH INSIDE/OUTSIDE	SEAT HEIGHT LOW/HIGH
38.50"/42.00"	20.00"/28.00"	18.50"/23.00"	18.50"/22.00"



Includes:

- Adjustable headrest-0006A8815-1 PU

Green made with 98% recyclable materials

RTA PRICE ***ASSEMBLED PRICE**

- \$671.00 Each
- \$729.00 Each

HEIGHT LOW/HIGH	WIDTH INSIDE/OUTSIDE	DEPTH INSIDE/OUTSIDE	SEAT HEIGHT LOW/HIGH
45.00"/51.50"	20.00"	18.50"/23.00"	18.50"/22.00"



- Standard model

Green made with 98% recyclable materials

RTA PRICE ***ASSEMBLED PRICE**

- \$641.00 Each
- \$699.00 Each

HEIGHT LOW/HIGH	WIDTH INSIDE/OUTSIDE	DEPTH INSIDE/OUTSIDE	SEAT HEIGHT LOW/HIGH
38.50"/42.00"	20.00"	18.50"/23.00"	18.50"/22.00"

Add "A" at end of model number for assembled product. See 'Assembled and RTA Product' on page 1 for details.



9889V AQUA II

- Mid back elastomeric mesh/fabric chair
- Floating synchro mechanism
- Adjustable lumbar
- Adjustable back angle
- 5 star nylon base
- Gas lift
- Waterfall seat front
- Phased two-step back release mechanism
- Rated for 350 lbs.
- Soft casters available

Includes:

- Adjustable headrest-0006A8815-1 PU
- Height & width adjustable armset with sliding & pivoting arm pads-9889A006

Also available:

- Height & width adjustable armset-9895A006

Green™ made with 98% recyclable materials

COLORS

- 4406 Black Fabric Seat
- Choose Color:*
- KM-03 Black Mesh Back
- KM-03-1 Gray Mesh Back
- KM-03-3 Brown Mesh Back
- KM-03-5 Navy Mesh Back

RTA PRICE

\$641.00
Each

***ASSEMBLED PRICE**

\$699.00
Each

HEIGHT LOW/HIGH	WIDTH INSIDE/OUTSIDE	DEPTH INSIDE/OUTSIDE	SEAT HEIGHT LOW/HIGH
45.00"/51.50"	20.00"/28.00"	18.50"/23.00"	18.50"/22.00"

Also Available

Includes all the standard features of the 9889V:



Includes:

- Height & width adjustable armset with sliding & pivoting arm pads-9889A006

Also available:

- Height & width adjustable armset-9895A006

Green™ made with 98% recyclable materials

RTA PRICE

\$611.00
Each

***ASSEMBLED PRICE**

\$669.00
Each

HEIGHT LOW/HIGH	WIDTH INSIDE/OUTSIDE	DEPTH INSIDE/OUTSIDE	SEAT HEIGHT LOW/HIGH
38.50"/42.00"	20.00"/28.00"	18.50"/23.00"	18.50"/22.00"



Includes:

- Adjustable headrest-0006A8815-1 PU

Green™ made with 98% recyclable materials

RTA PRICE

\$571.00
Each

***ASSEMBLED PRICE**

\$629.00
Each

HEIGHT LOW/HIGH	WIDTH INSIDE/OUTSIDE	DEPTH INSIDE/OUTSIDE	SEAT HEIGHT LOW/HIGH
45.00"/51.50"	20.00"	18.50"/23.00"	18.50"/22.00"



- Standard model

Green™ made with 98% recyclable materials

RTA PRICE

\$541.00
Each

***ASSEMBLED PRICE**

\$599.00
Each

HEIGHT LOW/HIGH	WIDTH INSIDE/OUTSIDE	DEPTH INSIDE/OUTSIDE	SEAT HEIGHT LOW/HIGH
38.50"/42.00"	20.00"	18.50"/23.00"	18.50"/22.00"

Add "A" at end of model number for assembled product. See 'Assembled and RTA Product' on page 1 for details.



9893E AQUA II

- Elastomeric mesh/fabric seat task stool
- No tilt
- Adjustable lumbar
- 360° swivel
- Adjustable height foot ring
- 5 star steel base with casters
- Waterfall seat front
- Gas lift with 10" height range
- Adjustable height and width arms
- Rated for 350 lbs.

Also available:

- Glides—sold separately

Green™ made with 100% recyclable materials

COLORS

- 4406 Black Fabric Seat
- Choose Color:*
- KM-03 Black Mesh Back
- KM-03-1 Gray Mesh Back
- KM-03-3 Brown Mesh Back
- KM-03-5 Navy Mesh Back

RTA PRICE

\$711.00
Each

*ASSEMBLED PRICE

\$769.00
Each

HEIGHT
LOW/HIGH
43.75"/53.75"

WIDTH
INSIDE/OUTSIDE
20.25"

DEPTH
INSIDE/OUTSIDE
18.75"/24.00"

SEAT HEIGHT
LOW/HIGH
23.75"/33.75"

Add "A" at end of model number for assembled product. See 'Assembled and RTA Product' on page 1 for details.



9895J AQUA III

- Mid back all over elastomeric mesh chair
- Adjustable lumbar
- Adjustable back angle
- Sliding seat pan
- Gas lift
- Floating synchro mechanism
- Phased two-step back release mechanism
- Rated for 350 lbs.

Includes:

- Adjustable headrest-0006A8815-1 PU
- Height & width adjustable armset with sliding & pivoting arm pads-9889A006

Also available:

- Height & width adjustable armset-9895A006

Green™ made with 99% recyclable materials

COLORS

- KM-03 Black
- KM-03-1 Gray
- KM-03-3 Brown
- KM-03-5 Navy

RTA PRICE

\$841.00
Each

***ASSEMBLED PRICE**

\$899.00
Each

HEIGHT LOW/HIGH	WIDTH INSIDE/OUTSIDE	DEPTH INSIDE/OUTSIDE	SEAT HEIGHT LOW/HIGH
44.75"/51.25"	20.25"/20.50"	20.00"/25.00"	18.00"/21.50"

Also Available

Includes all the standard features of the 9889V:



Includes:

- Height & width adjustable armset with sliding & pivoting arm pads-9889A006

Also available:

- Height & width adjustable armset-9895A006

Green™ made with 99% recyclable materials

RTA PRICE

\$811.00
Each

***ASSEMBLED PRICE**

\$869.00
Each

HEIGHT LOW/HIGH	WIDTH INSIDE/OUTSIDE	DEPTH INSIDE/OUTSIDE	SEAT HEIGHT LOW/HIGH
39.25"/42.75"	20.25"/20.50"	20.00"/25.00"	18.00"/21.50"



Includes:

- Adjustable headrest-0006A8815-1 PU

Green™ made with 99% recyclable materials

RTA PRICE

\$771.00
Each

***ASSEMBLED PRICE**

\$829.00
Each

HEIGHT LOW/HIGH	WIDTH INSIDE/OUTSIDE	DEPTH INSIDE/OUTSIDE	SEAT HEIGHT LOW/HIGH
44.75"/51.25"	20.25"	20.00"/25.00"	18.00"/21.50"



- Standard model

Green™ made with 99% recyclable materials

RTA PRICE

\$741.00
Each

***ASSEMBLED PRICE**

\$799.00
Each

HEIGHT LOW/HIGH	WIDTH INSIDE/OUTSIDE	DEPTH INSIDE/OUTSIDE	SEAT HEIGHT LOW/HIGH
39.25"/42.75"	20.25"	20.00"/25.00"	18.00"/21.50"

Add "A" at end of model number for assembled product. See 'Assembled and RTA Product' on page 1 for details.



9961 ESSENTIALS

- Stacking chair
- Full 20 1/2" inside seat width
- Fabric with stain guard protection
- Welded steel frame
- Ganging capability with 0005 connector and 0004 table
- Rated for 350 lbs.

Green™ made with 94% recyclable materials



COLORS	RTA PRICE	*ASSEMBLED PRICE
• 4406 Win Win Black	\$179.00	\$205.00
• 4434 Win Win Blue	Each	Each
• 4475 Win Win Burgundy		
• 4408 Win Win Grey		
• 2206 PVC Black		

HEIGHT LOW/HIGH	WIDTH INSIDE/OUTSIDE	DEPTH INSIDE/OUTSIDE	SEAT HEIGHT LOW/HIGH
31.00"	20.50"/23.50"	18.00"/23.00"	18.00"



0004 ESSENTIALS

- Free standing full size table
- Black melamine top
- Black steel legs (matte black)
- Sold in quantity of 2
- Ganging capability with 0005 connector and 9961 chair



- Ganging connector for use with 0004 table and 9961 chair

COLORS	RTA PRICE	*ASSEMBLED PRICE
• 0702 Black	\$208.00 (2 Pack) (\$104.00) Each	\$324.00 (2 Pack) (\$162.00) Each
• 0006 Black	N/A	\$13.00 Each

	HEIGHT LOW/HIGH	WIDTH INSIDE/OUTSIDE	DEPTH INSIDE/OUTSIDE	SEAT HEIGHT LOW/HIGH
Table Dimensions	18.00"	21.50"	21.50"	

Add "A" at end of model number for assembled product. See 'Assembled and RTA Product' on page 1 for details.



CHAIR SAFETY TIPS

Guidelines to ensure that your ChairWorks® chair will provide years of comfort and service.

- Always read and follow assembly instructions. Make sure that all of the pieces of your ChairWorks chair are installed in the proper order to ensure structural integrity.
- Check that chair casters are fully inserted into the base.
- Inspect your chair for loose or worn parts at least once a year. For example tighten any loose connections on the arms.
- ALWAYS keep the base of your chair completely on the floor.
- Many ChairWorks chairs have a tilt tension control on the seating mechanism, under the seat. The tension control compensates for different body weights and postures. Always ensure that the control is properly adjusted for a smooth and controlled tilt motion.
- DO NOT stand on your chair, or sit on the arms.
- DO NOT put electrical appliances on your chair.
- Do choose the right chair for your work environment to get the best support and comfort for the daily tasks of your job.

ChairWorks® Limited Lifetime Warranty

ChairWorks® promises to repair or replace any ChairWorks Brand product or component that is defective in material or workmanship for as long as you, the original purchaser, own it. This is your sole and exclusive remedy. This warranty is subject to the limitations, exclusions and other provisions below. It applies to product manufactured after April 1, 2010.

Limitations Involving Particular Product Lines, Materials, and Components:

The particular product lines, materials and components listed below are covered according to the following schedule from the date of sale:

Twelve Years – Wood seating

Ten Years – Seating controls

Five Years – Glides, casters and polymer-based components, seating upholstery fabrics, foam.

Note: Pneumatic cylinders on seating have been removed from the Limitations involving materials and components section and are now included under ChairWorks Limited Lifetime Warranty.

Exclusions:

This warranty does not apply and no other warranty applies to:

Normal wear and tear, which are to be expected over the course of ownership.

Damage caused by the carrier in-transit, which will be handled under separate terms.

Modifications or attachments to the product that are not approved by ChairWorks.

Products that were not installed, used or maintained in accordance with product instructions and warnings.

Products used for rental purposes.

Seating Usage:

Normal commercial usage for seating is defined as the equivalent of a single shift, forty (40) hour workweek. To the extent that a seating product is used in a manner exceeding this, the applicable warranty period will be reduced in a pro-rata manner (except for models 9375, 9391, 9383, and 9384 Reality™ Series 24/7 Intensive Use chairs, which are warranted for multiple shifts).

Seating models all carry a 350 pound rating, with the exception of Reality™ 9375 which is warranted with a 500 pound rating.

A Word About Color Variations, Fabrics and Finishes:

Some natural variations occurring in wood, leather or other natural materials are inherent to their character, and cannot be avoided. Therefore they are not considered defects. ChairWorks does not warrant the color-fastness or matching of colors, grains or textures of such materials.

TO THE EXTENT ALLOWED BY LAW, CHAIRWORKS MAKES NO OTHER WARRANTY, EITHER EXPRESS OR IMPLIED, INCLUDING ANY WARRANTY OF MERCHANTABILITY OR FITNESS FOR A PARTICULAR PURPOSE. CHAIRWORKS WILL NOT BE LIABLE FOR ANY CONSEQUENTIAL OR INCIDENTAL DAMAGES.

Notice to Purchasers for Home or Personal Use:

Federal law does not permit the exclusion of certain implied warranties for consumer products. Therefore, if you are purchasing this product for home or personal use, the exclusion of implied warranties noted in the above paragraph does not apply to you. Some states do not allow the exclusion or limitation of incidental or consequential damages, so the above limitation or exclusion may not apply to you. This warranty gives you specific legal rights, and you may also have other rights, which vary from state to state.

This warranty applies only to products sold within the United States of America and the Commonwealth of Canada.

To Obtain Service Under This Warranty:

Your ChairWorks Dealer is our mutual partner in supporting your warranty requests. By following the procedures outlined below, you can be assured of the best level of service.

1. Contact the Dealer or Salesperson from whom the product was purchased within 30 days of discovery of the defect. Be prepared to affirm you are the original purchaser of the product and to provide the label information from the product in question.
2. Your Dealer or Salesperson will gather all pertinent information regarding the claim, inspect the product and contact a ChairWorks customer support representative. (Please allow a reasonable amount of time for inspection and review.)
3. If ChairWorks affirms that the product in question is eligible under the conditions of the warranty as stated above, the customer support representative or another representative of the Company will determine whether to provide replacement parts, authorize repairs or replace the product.

Add "A" at end of model number for assembled product. See 'Assembled and RTA Product' on page 1 for details.

Leather



2506 Black
SAC Leather/PVC



0606 Black
C1 Leather/PVC



0633 Green
C1 Leather/PVC



0634 Navy
C1 Leather/PVC



0657 Berry
C1 Leather/PVC



0697 Cobblestone
C1 Leather/PVC

PU



8815-1 Black
PU

PVC

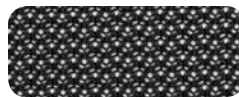


2206 Black
Heavy Duty PVC

Mesh



B006 Black
Mesh



JY06 Black
Mesh



KM-03 Black
Mesh



KM-03-1 Gray
Mesh



KM-03-3 Brown
Mesh



KM-03-5 Navy
Mesh

Fabric



1521 Black
Fabric



1532P Blue
Fabric



1533P Ebony
Fabric



1535P Pewter
Fabric



2608 Black
Fabric



4406 Black
Fabric



4408 Grey
Fabric



4434 Blue
Fabric



4475 Burgundy
Fabric



4706 Black
Fabric



4734 Blue
Fabric



4769 Brown
Fabric



4777 Charcoal
Fabric

Add "A" at end of model number for assembled product. See 'Assembled and RTA Product' on page 1 for details.



Printed on recycled paper
that is 100% recyclable.



ChairWorks® • 755 Raco Drive, Suite A • Lawrenceville, Georgia 30046
770-277-2577 • Fax 770-277-2578 • www.chairworks.com

Australia~Belgium~Denmark~France~Hong Kong~Ireland~Japan~New Zealand~Norway~South Africa~Spain~Taiwan~United Kingdom~United States

The ChairWorks® Manufacturing Group, Ltd.



*All chairs ship RTA unless otherwise
specified. See "Assembled and RTA
Product" on page 1 for details.*

