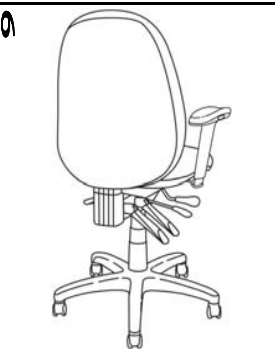
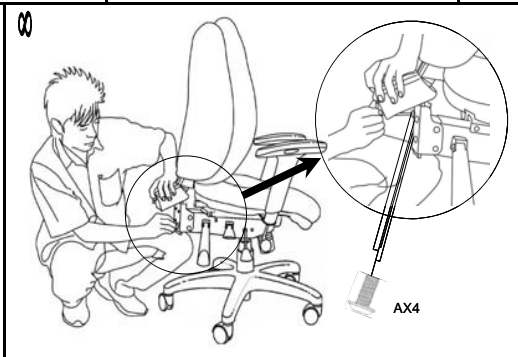
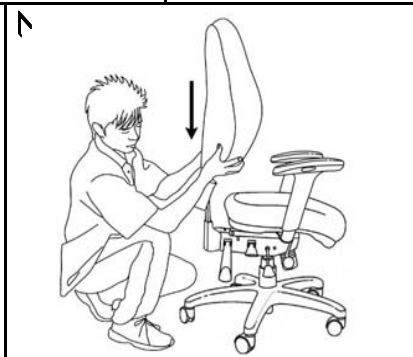
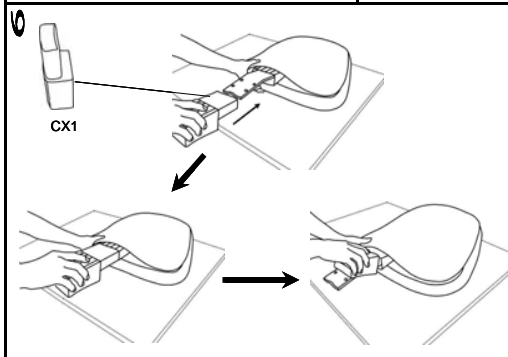
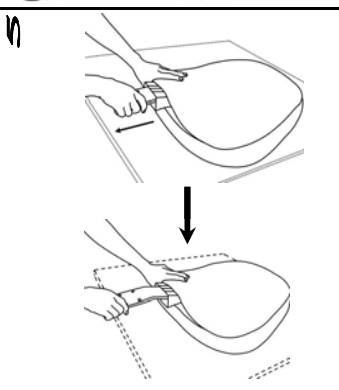
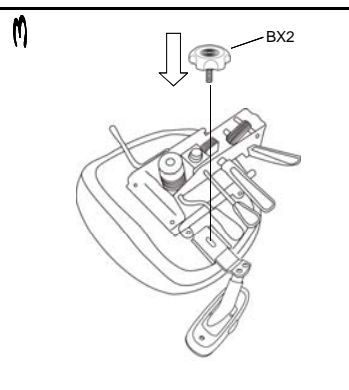
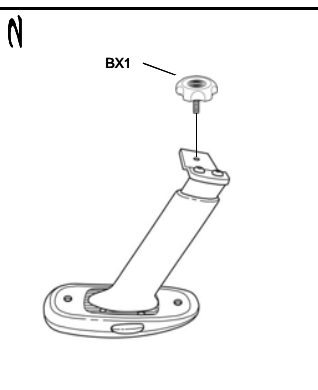
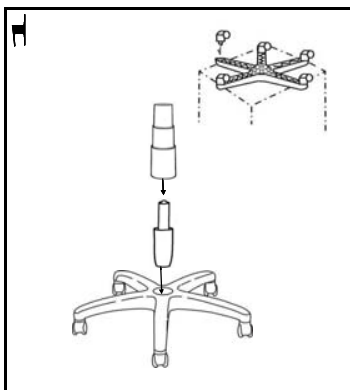


ASSEMBLY INSTRUCTIONS MODEL 9375J

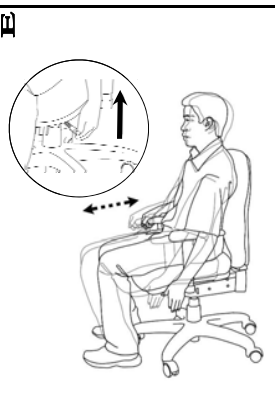
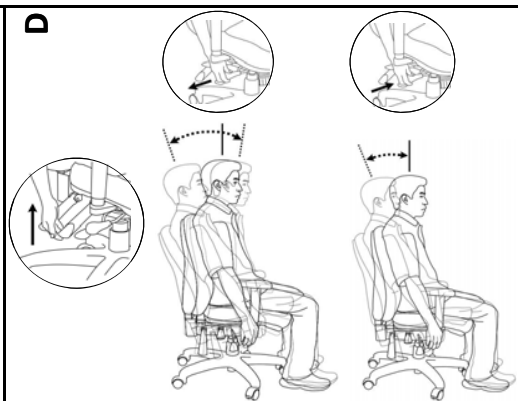
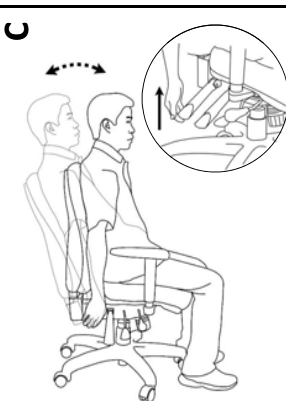
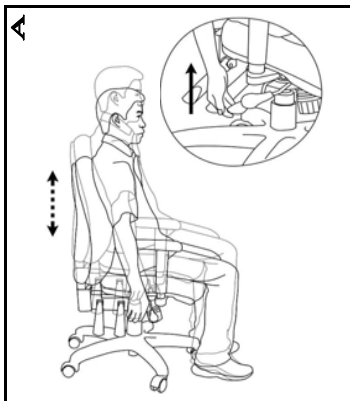
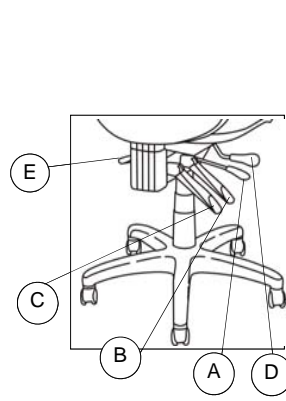
REMOVE ALL ITEMS FROM THE CARTON. VERIFY ALL PIECES BEFORE ASSEMBLY



QTY	DESCRIPTION
4	A SCREW
2	B ARM KNOB
1	C J-BAR COVER
1	001 ALLEN WRENCH FOR SCREWS(A)



REALITY 9375J OPERATING INSTRUCTIONS



A. SEAT HEIGHT ADJUSTMENT
 ■ TO RAISE THE SEAT:
 LEAN SLIGHTLY FORWARDS WHILE SEATED-TO RELIEVE THE PRESSURE ON THE TILT MECHANISM.
 REACH UNDER THE RIGHT SIDE OF THE CHAIR AND LOCATE THE HANDLE AND RAISE YOURSELF UP SLIGHTLY TO ALLOW THE CHAIR TO REACH YOUR DESIRED HEIGHT.
 ■ TO LOWER THE SEAT:
 REMAIN SEATED AND LIFT THE HANDLE UPWARDS UNTIL THE CHAIR LOWERS TO YOUR DESIRED HEIGHT.

B. SEAT POSTURE ADJUSTMENT
 PULL THE HANDLE "UP" TO FREE THE MOVEMENT TO YOUR DESIRED ANGLE. PUT THE HANDLE "DOWN" TO LOCK AND FIX YOUR DESIRED POSITION.

C. BACK POSTURE ADJUSTMENT
 PULL THE HANDLE "UP" TO FREE THE MOVEMENT TO YOUR DESIRED ANGLE. PUT THE HANDLE "DOWN" TO LOCK AND FIX YOUR DESIRED POSITION.

D. SEAT ANGLE ADJUSTMENT
 PULL UP THE HANDLE "B" TO FREE THE MOVEMENT FIRST, AND THEN LOCK THE HANDLE "D" TO YOUR DESIRED ANGLE. PULL OUT THE HANDLE D TO LEAN THE SEAT FORWARD OR BACK. WHEN LOCKING THE HANDLE D, CAN LEAN THE SEAT BACK ONLY.

E. SEAT SLIDING ADJUSTMENT
 ADJUST LEVER D (AS SHOWN ABOVE) UP TO POSITION SEAT AND THEN DOWN TO LOCK SEAT INTO POSITION. NOTE: BACK MUST BE IN LOCKED POSITION (B) TO USE THE SLIDING SEAT FEATURE.

PREVENTATIVE MAINTENANCE AND WARNING

USE THIS PRODUCT ONLY FOR SEATING ONE PERSON AT A TIME
 DO NOT USE CHAIR AS STEP STOOL/LADDER
 DO NOT USE CHAIR UNLESS ALL BOLTS, SCREWS ARE TIGHT
 CHECK AND RETIGHTEN ALL BOLTS, SCREWS EVERY 6 MONTHS

ANY QUESTIONS PLEASE CONTACT
 CHAIRWORKS AMERICA
 755 RACK DRIVE, SUITE A
 LAWRENCEVILLE, GA 30046
 1-888-217-2577