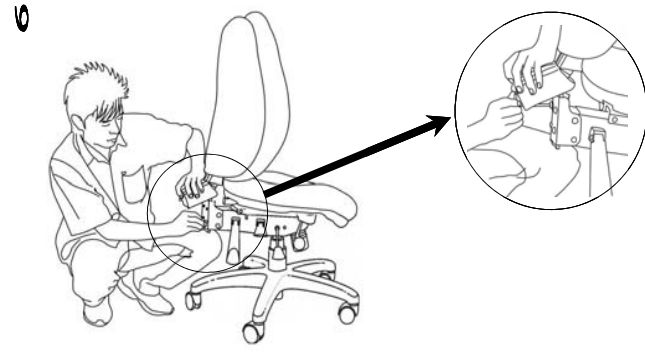
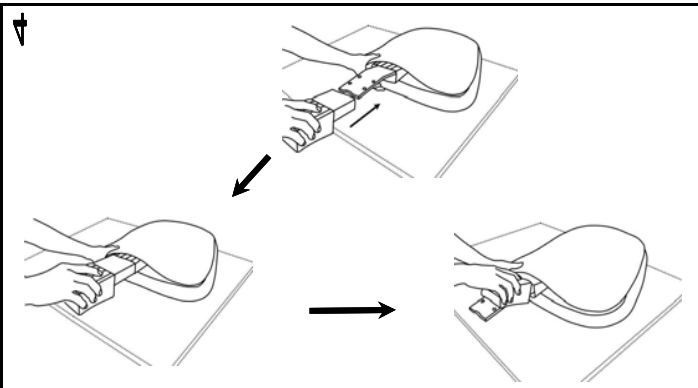
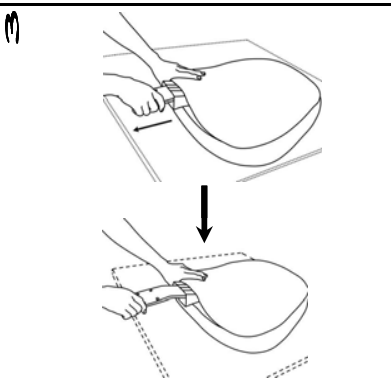
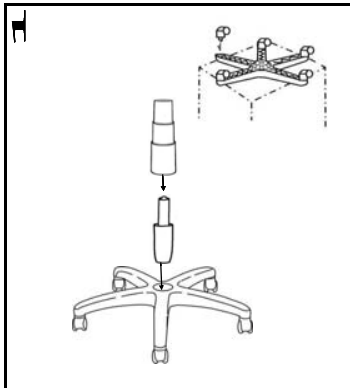
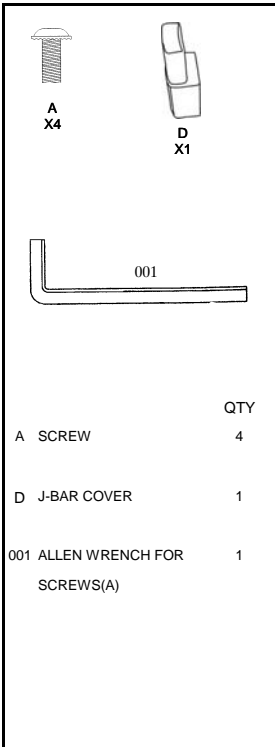
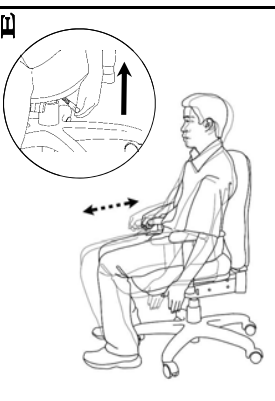
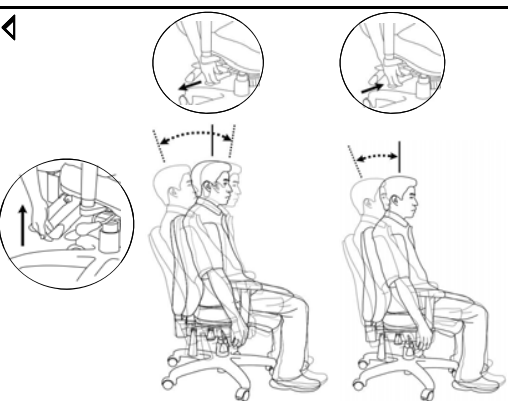
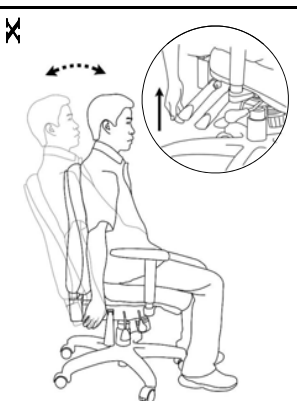
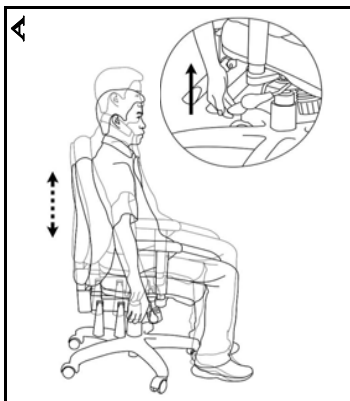
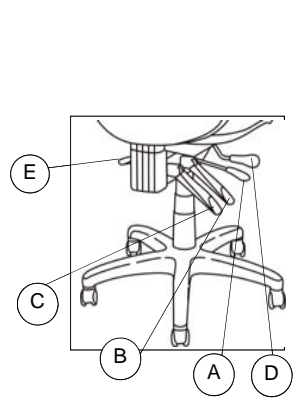


ASSEMBLY INSTRUCTIONS MODEL 9383J and 9384J and 9391J

REMOVE ALL ITEMS FROM THE CARTON. VERIFY ALL PIECES BEFORE ASSEMBLY



REALITY 9383J/9384J/9391J OPERATING INSTRUCTIONS



**A. SEAT HEIGHT ADJUSTMENT**  
 ■ TO RAISE THE SEAT:  
 LEAN SLIGHTLY FORWARDS WHILE SEATED- TO RELIEVE THE PRESSURE ON THE TILT MECHANISM.  
 REACH UNDER THE RIGHT SIDE OF THE CHAIR AND LOCATE THE HANDLE AND RAISE YOURSELF UP SLIGHTLY TO ALLOW THE CHAIR TO REACH YOUR DESIRED HEIGHT.  
 ■ TO LOWER THE SEAT:  
 REMAIN SEATED AND LIFT THE HANDLE UPWARDS UNTIL THE CHAIR LOWERS TO YOUR DESIRED HEIGHT.

**B. SEAT POSTURE ADJUSTMENT**  
 PULL THE HANDLE "UP" TO FREE THE MOVEMENT TO YOUR DESIRED ANGLE. PUT THE HANDLE "DOWN" TO LOCK AND FIX YOUR DESIRED POSITION.

**C. BACK POSTURE ADJUSTMENT**  
 PULL THE HANDLE "UP" TO FREE THE MOVEMENT TO YOUR DESIRED ANGLE. PUT THE HANDLE "DOWN" TO LOCK AND FIX YOUR DESIRED POSITION.

**D. SEAT ANGLE ADJUSTMENT**  
 PULL UP THE HANDLE "B" TO FREE THE MOVEMENT FIRST, AND THEN LOCK THE HANDLE "D" TO YOUR DESIRED ANGLE. PULL OUT THE HANDLE D TO LEAN THE SEAT FORWARD OR BACK. WHEN LOCKING THE HANDLE D, CAN LEAN THE SEAT BACK ONLY.

**E. SEAT SLIDING ADJUSTMENT**  
 ADJUST LEVER D (AS SHOWN ABOVE) UP TO POSITION SEAT AND THEN DOWN TO LOCK SEAT INTO POSITION.  
 NOTE: BACK MUST BE IN LOCKED POSITION (B) TO USE THE SLIDING SEAT FEATURE.

PREVENTATIVE MAINTENANCE AND WARNING

USE THIS PRODUCT ONLY FOR SEATING ONE PERSON AT A TIME  
 DO NOT USE CHAIR AS STEP STOOL/LADDER  
 DO NOT USE CHAIR UNLESS ALL BOLTS, SCREWS ARE TIGHT  
 CHECK AND RETIGHTEN ALL BOLTS, SCREWS EVERY 6 MONTHS

ANY QUESTIONS PLEASE CONTACT  
 CHAIRWORKS AMERICA  
 755 RACK DRIVE, SUITE A  
 LAWRENCEVILLE, GA 30046  
 1-888-217-2577